

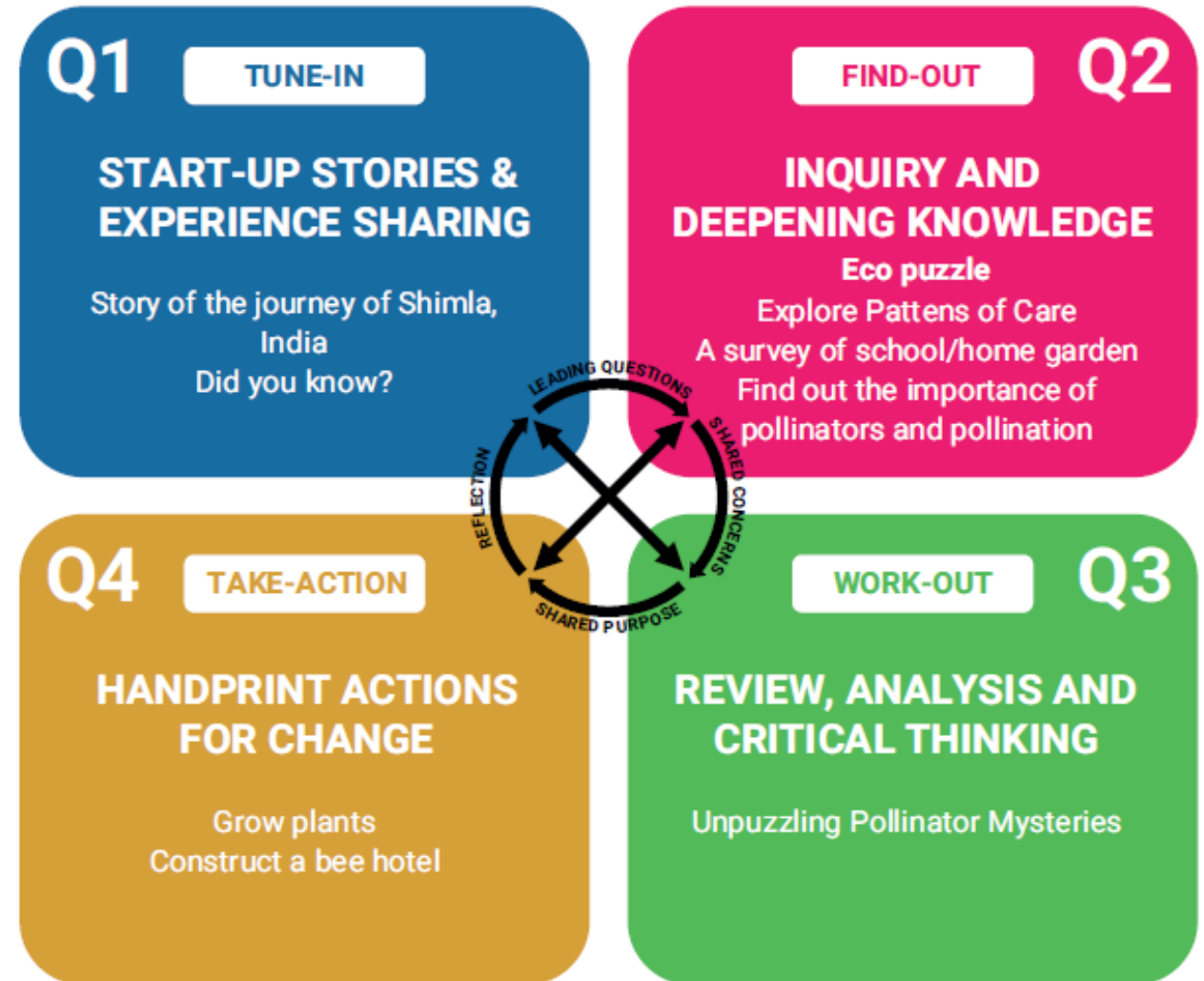
3



Bees and Pollination



Food on the shelves of supermarkets will be close to empty in a few years' time and food prices will soar if pollinators disappear from the face of the earth. Fruits and seeds are also necessary for the existence of the plants since they grow into new plants. Honey bees are one of the major pollinators besides many other pollinators such as other insects, bats, birds, other animals, air, water, and even sometimes humans as we artificially try to pollinate flowers. We shall see in this exemplar how honey bees and pollination are linked with the economic growth of farmers, sustainable production, climate change and dwindling bee population.



Exemplar on Bees and Pollination



The exemplar begins with real life story of apple farming in Shimla and how it has changed over time. Bees have reduced and climate change has impacted the production cycle. Story talks about different strategies adopted by farmers to address the issue. The eco puzzle accompanying the story help students understand the interconnectedness of human activities and bees. The inquiry activity guides children on how to conduct a survey of their school garden to understand more about flowers and pollinators. These activities are designed to help students widen their understanding about the bees a pollinators. Following this, there are activities to help understand the concerns related to bees as pollinators, The Mystery Method activity using story cards encourages learners to critically look at the issue from sustainability point of view and find solutions. Teacher can further deepen children’s understanding by encouraging them to look at ethical concerns connected with the concept through question like:

- Is it OK to keep glucose feeders for bees instead of natural flowers during non-flowering season?
- A world without bees, or a world without honey? Which is worse? Profiting from honey requires the manipulation and exploitation of the insects’ desire to live and protect their hive. Like other factory-farmed animals, honeybees are victims of unnatural living conditions, genetic manipulation, and stressful transportation.

The exemplar suggests activities like growing different plants at home or school where pollinator can feed. Handprint actions like preparation of different models of bee hotels to attract more bees and developing posters for generating awareness among people on the importance of bees and pollinators in food production are also recommended.